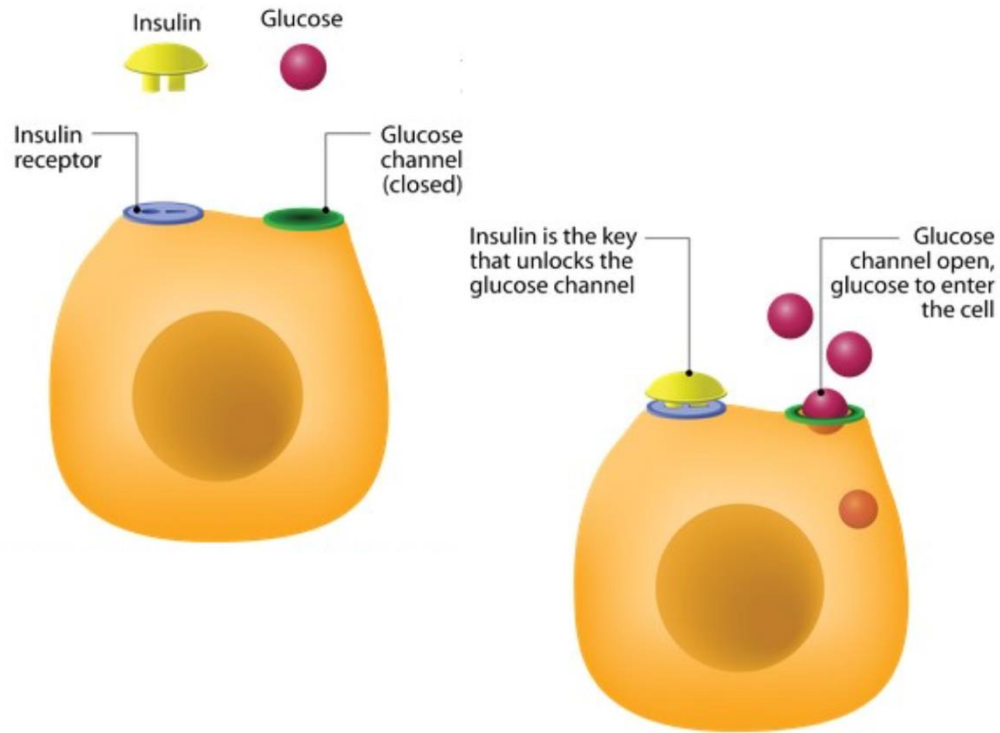




## How does insulin work?



## Magnesium and Chromium are key for a normal insulin response

Every cell in the horse relies on glucose to fuel its function and growth. Magnesium and Chromium optimize the activity of insulin receptors, unlocking the glucose absorption pathway into the tissues. This leads to increased glucose uptake by the cells and more efficient clearance of glucose from the bloodstream. Optimum dietary levels of Magnesium and Chromium therefore maximize utilization of glucose, resulting in improved overall health and performance. Deficiencies in these nutrients can contribute to insulin resistance, a key component of Equine Metabolic Syndrome (EMS). With chronic insulin resistance, glucose and insulin levels stay elevated, leading to systemic inflammation. This makes horses with EMS very susceptible to laminitis with almost any triggering event.

DAILY MAGNESIUM AND CHROMIUM SUPPLEMENT



**EZIUM Metabolic** contains KemTRACE Chromium, the only FDA reviewed source of Chromium Propionate for horses on the market today.



We don't think you should have to be a millionaire to afford a quality Magnesium supplement.

*The Solution is E-Z*

[www.ezium.org](http://www.ezium.org)

CHELATED MAGNESIUM SUPPLEMENT WITH CHROMIUM



HELPS SOLVE THE EQUINE METABOLIC SYNDROME PUZZLE

[www.ezium.org](http://www.ezium.org)

## Could my horse be deficient in Magnesium and Chromium?

If your horse is under stress from training, competition, or nutritional/medical challenges, the most likely answer is **YES**. Exercise, sweating, and physical strain can increase your horse's Magnesium requirements. The demand for Chromium can increase from 10 to 300 times in a stressful situation.

## What are the symptoms of a Magnesium deficiency?

If there is inadequate Magnesium, the flight or fight response is more easily triggered, making the horse hyper-excitable. The nerve and muscle cells are primed to "fire now". Other symptoms include:

- Nervousness, excitability, and flighty behavior
- Muscle cramps, tight muscles, tying up
- Jumpiness and hypersensitivity
- Inability to focus and relax

**Horses deficient in Magnesium are always tense and "on the muscle".**

## What disorders are linked to a Chromium deficiency?

Chromium is an essential nutrient involved in insulin dependent metabolism. Chromium assists insulin to bind to cellular receptors. If deficient, the cells become insulin resistant, leading to elevated blood levels of insulin and glucose. Elevated levels are associated with Equine Metabolic Syndrome. Symptoms of this syndrome include:

- Obesity, particularly fat accumulation in certain areas, primarily the neck
- Predisposition to developing laminitis



## EZIUM Metabolic and stress

Stress negatively impacts health and performance. Stressors include diet changes, travel, exercise, disease exposure, and more. When under stress, horses release cortisol (a stress hormone), which may result in aggressive behavior, suppression of the immune system and increased risk of ulcers, colic or diarrhea. Chromium has been shown to reduce the levels of cortisol, thereby reducing the negative impacts of stress.

## Why should I feed my horse EZIUM Metabolic?

Even when you feed the best forages and concentrates, your horse might not receive all the nutrients he needs. The form of minerals in even the best feeds can't always be readily absorbed by your horse.

The Chromium in EZium Metabolic has been proven to be readily absorbed and utilized to support metabolic processes. EZium metabolic also contains a chelated source of Magnesium called Magnesium Glycinate. Research shows that true amino acid chelates such as Magnesium Glycinate are the most bioavailable, best absorbed, and the most retained of all mineral forms on the market.

## Is EZIUM Metabolic safe and approved for feeding?

EZium Metabolic contains no substances prohibited for feeding by any equine organization governing body, including FEI, USEF, USDF, AQHA, and APHA. EZium Metabolic contains only ingredients approved for feeding to horses by the American Association of Feed Control Officials (AAFCO).

## What sizes are available? How much does it cost?

EZium is available in one-month and two-month quantities, offered in both plastic resealable pails and convenient refill packs.

Cost is around \$1.50/day, with lower costs for larger sizes and refill packs.